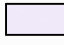




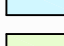
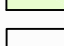
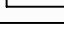
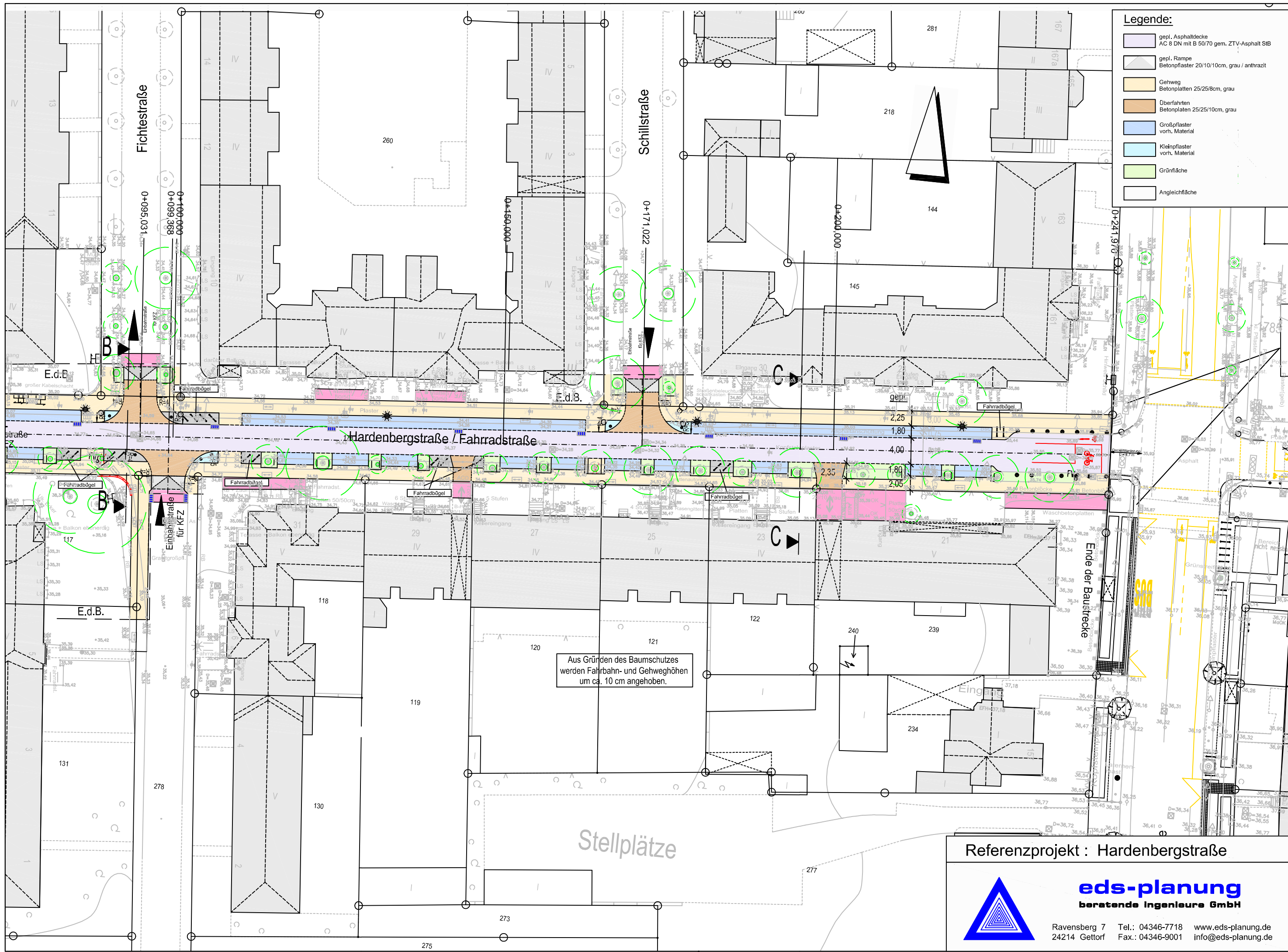


Legende:

-  gepl. Asphaltdecke
AC 8 DN mit B 50/70 gem. ZTV-Asphalt S1B
-  gepl. Rampe
Betonpflaster 20/10/10cm, grau / anthrazit
-  Gehweg
Betonplatten 25/25/8cm, grau
-  Oberfahrten
Betonplatten 25/25/10cm, grau
-  Großpflaster
vorh. Material
-  Kleinpflaster
vorh. Material
-  Grünfläche
-  Angiechfläche



Aus Gründen des Baumschutzes werden Fahr- und Gehweghöhen um ca. 10 cm angehoben.

Referenzprojekt : Hardenbergstraße



eds-planung
beratende Ingenieure GmbH

Ravensburg 7 Tel.: 04346-7718 www.eds-planung.de
24214 Gettorf Fax.: 04346-9001 info@eds-planung.de